

# New Outdoor Pavilion

Now Open



# For Lease

**Suite 308 – 2,421 rentable square feet**

- 117,564 RSF building
- 6 floors
- Free parking with 4:1,000 SF ratio
- Elevator lobby exposure
- On-site deli
- On-site fitness center
- Nine and ten foot ceiling heights
- Modern security system with card access control
- On-site management and leasing
- Free conference room
- Awarded the coveted Energy Star Rating
- LEED - EB Certified
- Immediate access to I-435

**Lighton I**  
**7300 College Blvd.**  
**Overland Park, KS 66210**

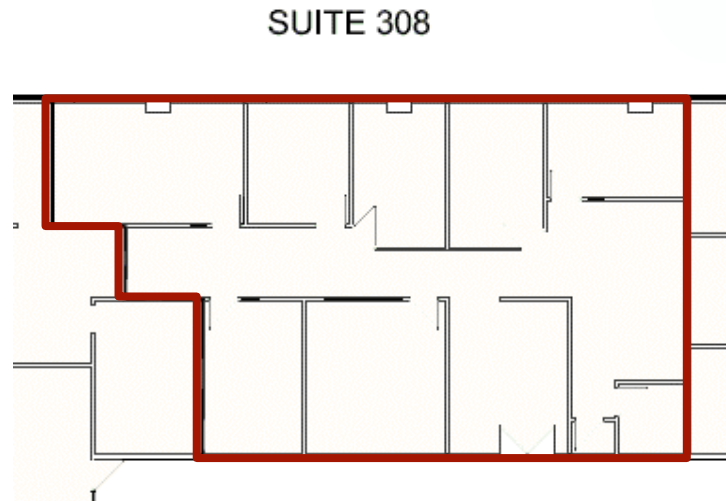
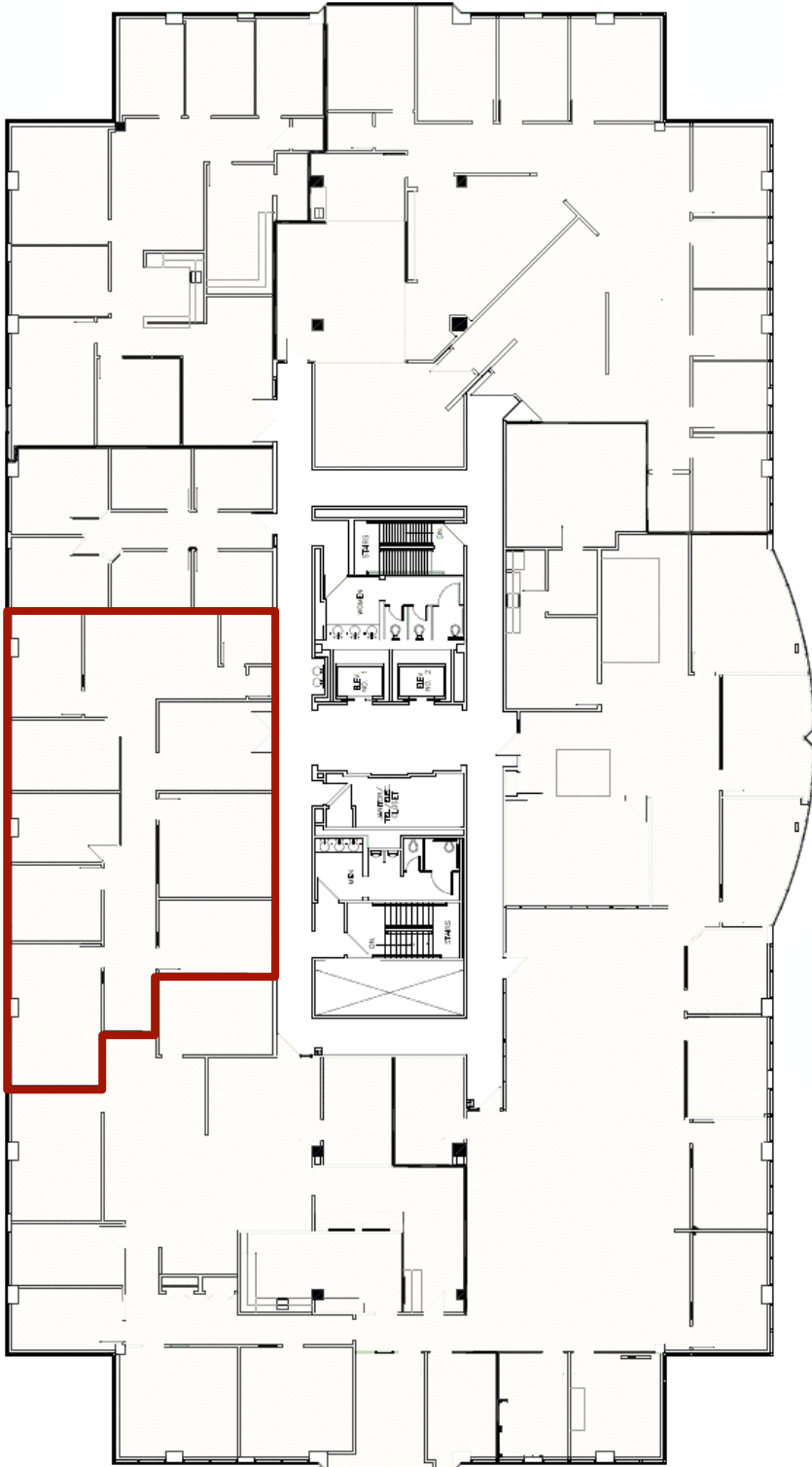
**Jeff Kembel, SIOR**  
+1 913 469 4604  
[jeff.kembel@am.jll.com](mailto:jeff.kembel@am.jll.com)

**Patrick Meraz, CCIM**  
+1 913 469 4622  
[patrick.meraz@am.jll.com](mailto:patrick.meraz@am.jll.com)

7500 College Boulevard • Suite 920 • Overland Park • Kansas 66210 • tel +1 913 469 4600 • fax +1 913 469 4650 • [www.jll.com/kansas-city](http://www.jll.com/kansas-city)

Disclaimer: Although information has been obtained from sources deemed reliable, Owner, Jones Lang LaSalle, and/or their representatives, brokers or agents make no guarantees as to the accuracy of the information contained herein, and offer the Property without express or implied warranties of any kind. The Property may be withdrawn without notice. ©2017. Jones Lang LaSalle. All rights reserved.

**Lighton I**  
**7300 College Blvd.**  
**Overland Park, KS 66210**  
**Suite 308 – 2,421 rentable square feet**



**SUITE 308**

**Jeff Kembel, SIOR**

+1 913 469 4604

[jeff.kembel@am.jll.com](mailto:jeff.kembel@am.jll.com)

**Patrick Meraz, CCIM**

+1 913 469 4622

[patrick.meraz@am.jll.com](mailto:patrick.meraz@am.jll.com)