

# For Lease

## 6<sup>th</sup> Floor – 6,565 rentable square feet

- 241,150 rsf building
- Free parking with 4:1,000 SF ratio
- On-site deli and numerous restaurants and shops within two blocks
- First class work out facility
- Nine and ten foot ceiling heights
- Modern security system with card access control
- On-site management and leasing
- Conference rooms available free of charge
- Competitive lease rates
- LEED Gold, EB Certified and Energy Star Rated
- ATM on site
- Fine mahogany wood trim and Italian marble lobbies

**Lighton Tower**  
**7500 College Blvd.**  
**Overland Park, KS 66210**

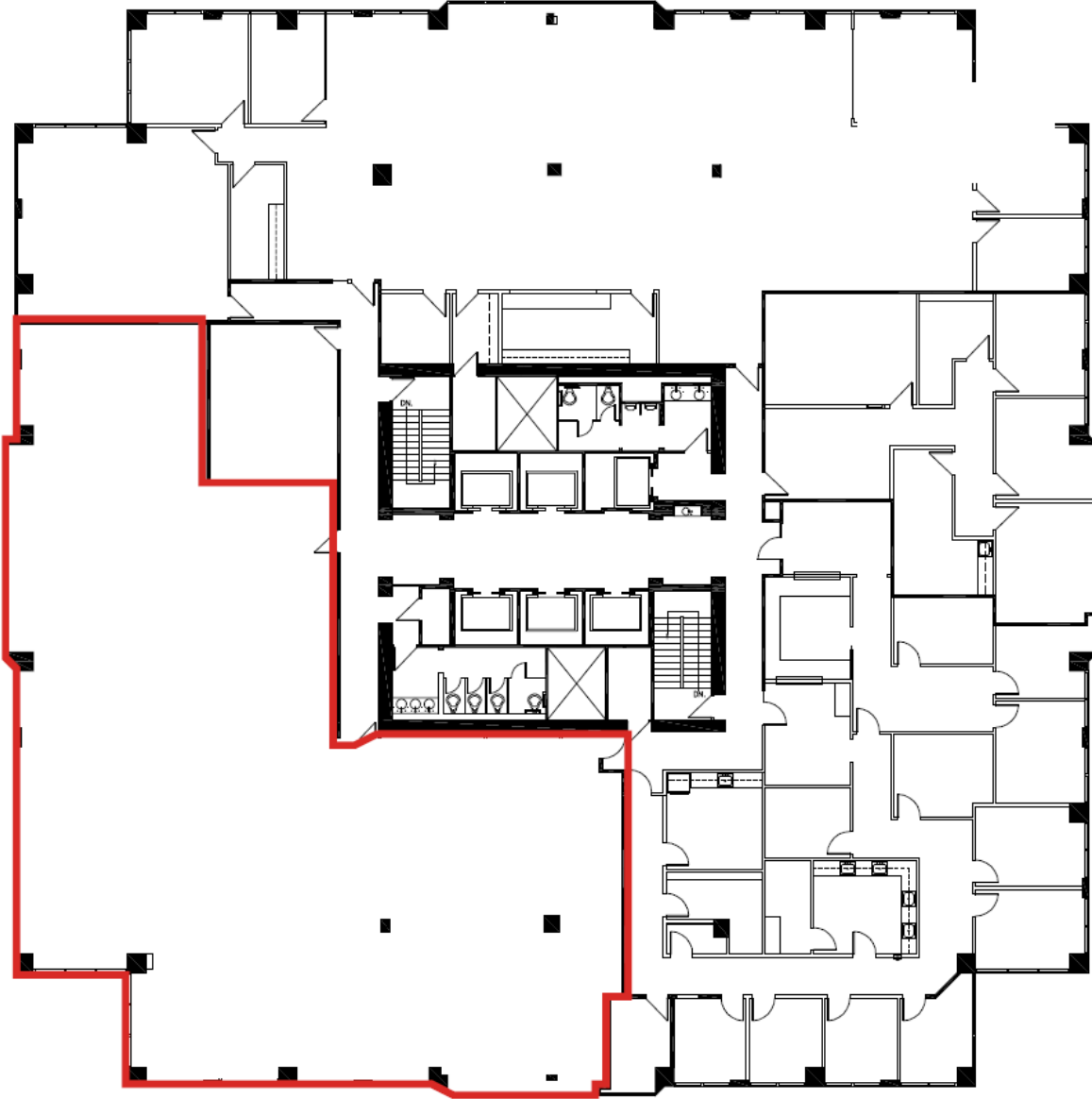
**Jeff Kembel, SIOR**  
+1 913 469 4604  
[jeff.kembel@am.jll.com](mailto:jeff.kembel@am.jll.com)

**Patrick Meraz, CCIM**  
+1 913 469 4622  
[patrick.meraz@am.jll.com](mailto:patrick.meraz@am.jll.com)

7500 College Boulevard • Suite 920 • Overland Park • Kansas 66210 • tel +1 913 469 4600 • fax +1 913 469 4650 • [www.jll.com/kansas-city](http://www.jll.com/kansas-city)

# For Lease

**6<sup>th</sup> Floor – 6,565 rentable square feet**



**Lighton Tower  
7500 College Blvd.  
Overland Park, KS 66210**

**Jeff Kembel, SIOR**  
+1 913 469 4604  
[jeff.kembel@am.jll.com](mailto:jeff.kembel@am.jll.com)

**Patrick Meraz, CCIM**  
+1 913 469 4622  
[patrick.meraz@am.jll.com](mailto:patrick.meraz@am.jll.com)

7500 College Boulevard • Suite 920 • Overland Park • Kansas 66210 • tel +1 913 469 4600 • fax +1 913 469 4650 • [www.jll.com/kansas-city](http://www.jll.com/kansas-city)

Disclaimer: Although information has been obtained from sources deemed reliable, Owner, Jones Lang LaSalle, and/or their representatives, brokers or agents make no guarantees as to the accuracy of the information contained herein, and offer the Property without express or implied warranties of any kind. The Property may be withdrawn without notice. ©2017. Jones Lang LaSalle. All rights reserved.

