

# Class A office space for lease

## Lighton Tower

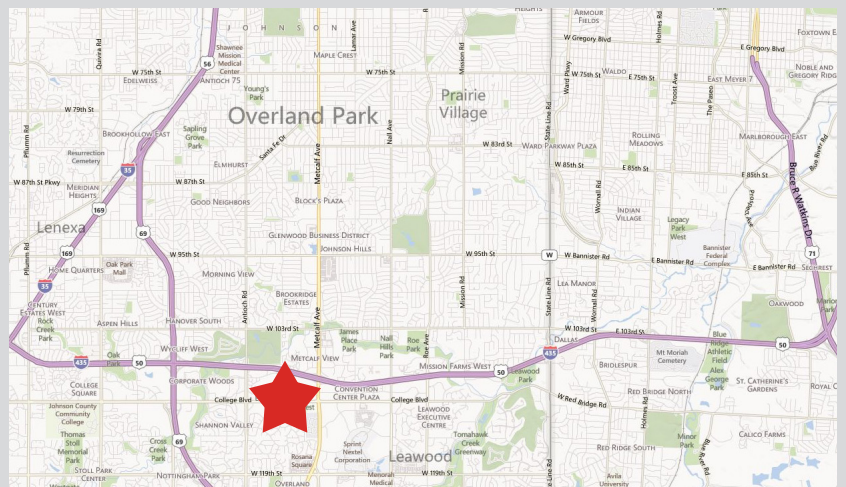
## College Boulevard and Metcalf Avenue

## Suite 1250 - 1,495 rentable square feet



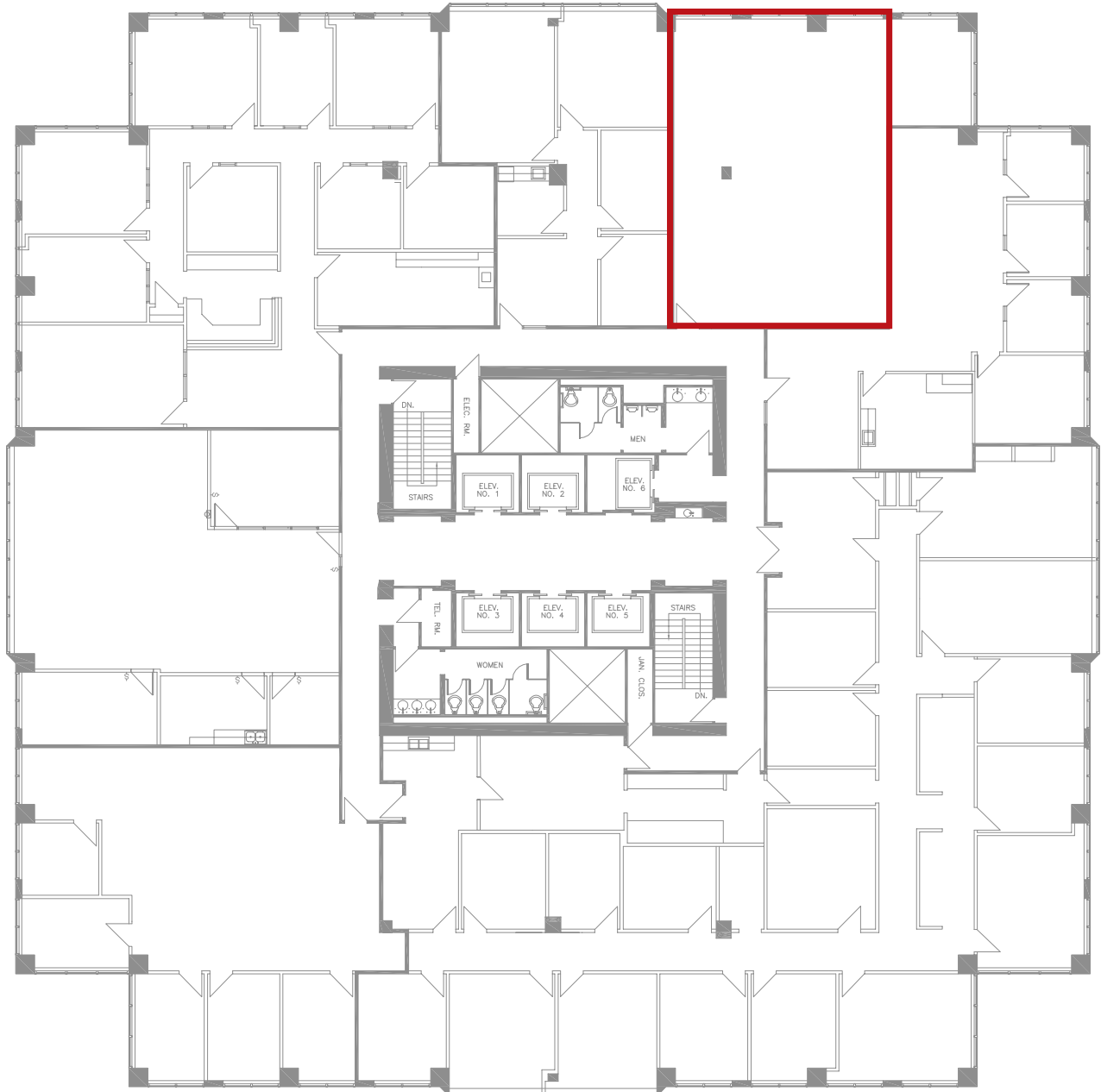
### Property highlights

- 241,150 RSF building
- 14 floors
- Free parking with 4:1,000 SF ratio
- On-site deli
- On-site fitness center
- Nine and ten foot ceiling heights
- Modern security system with card access control
- On-site management and leasing
- Free conference room
- Awarded the coveted Energy Star Rating
- LEED - EB Certified
- Immediate access to I-435



# Lighton Tower - 7500 College Blvd., Overland Park, Kansas

Suite 1250 - 1,495 rentable square feet



## Contact

**Jeff Kembel, SIOR**  
Senior Vice President  
+1 913 469 4604  
jeff.kembel@am.jll.com

**Patrick Meraz, CCIM**  
Vice President  
+1 913 469 4622  
patrick.meraz@am.jll.com

©2013 Jones Lang LaSalle IP, Inc. All rights reserved. All information contained herein is from sources deemed reliable; however, no representation or warranty is made to the accuracy thereof.