

Class A office space for lease

Lighton Tower

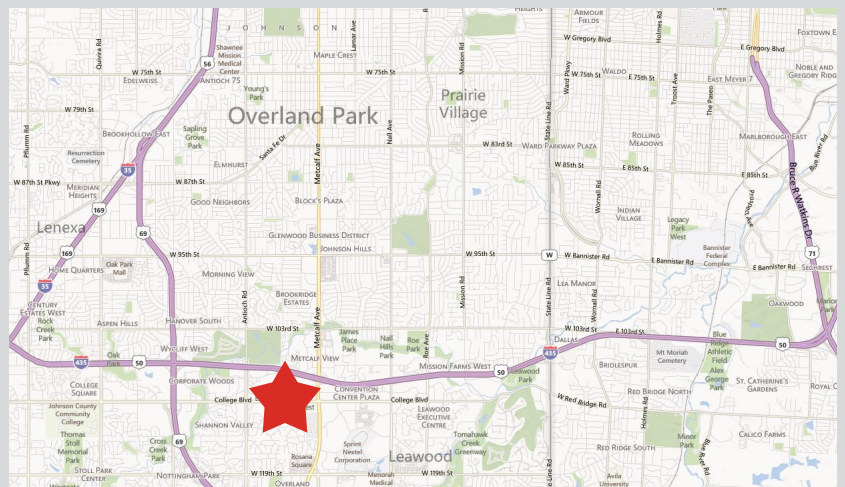
College Boulevard and Metcalf Avenue

Suite 1225 - 1,389 rentable square feet



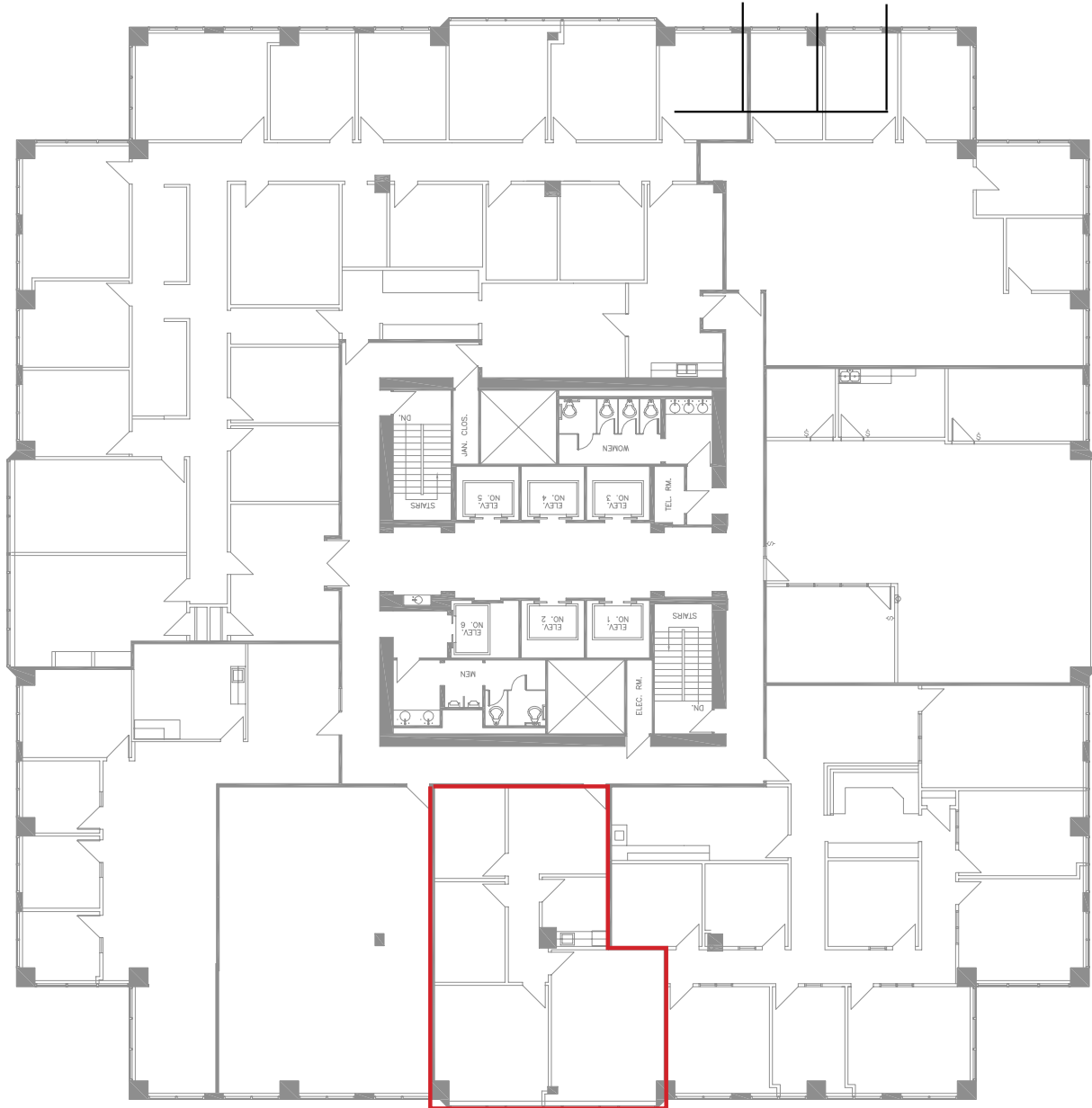
Property highlights

- 241,150 RSF building
- 14 floors
- Free parking with 4:1,000 SF ratio
- On-site deli
- On-site fitness center
- Nine and ten foot ceiling heights
- Modern security system with card access control
- On-site management and leasing
- Free conference room
- Awarded the coveted Energy Star Rating
- LEED - EB Certified
- Immediate access to I-435



Lighton Tower - 7500 College Blvd., Overland Park, Kansas

Suite 1225 - 1,389 rentable square feet



Contact

Jeff Kembel, SIOR
Senior Vice President
+1 913 469 4604
jeff.kembel@am.jll.com

Patrick Meraz, CCIM
Vice President
+1 913 469 4622
patrick.meraz@am.jll.com

©2016 Jones Lang LaSalle IP, Inc. All rights reserved. All information contained herein is from sources deemed reliable; however, no representation or warranty is made to the accuracy thereof.